



# Municipal Court

# Municipal Court

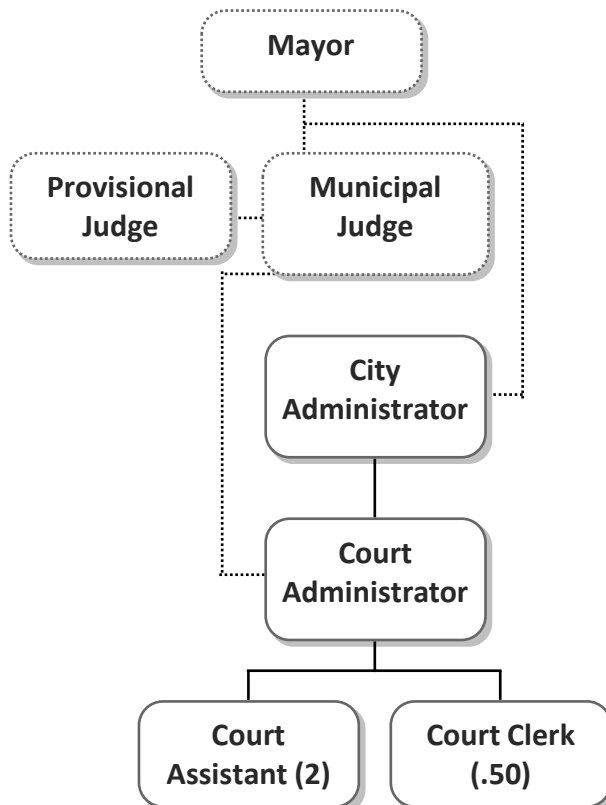
## Department Summary

---

	General	
<u>Program</u>	<u>Fund</u>	<u>Total</u>
Municipal Court	368,295	368,295
<b>Total</b>	<b>\$368,295</b>	<b>\$368,295</b>

## Organization Chart

---



# Municipal Court

<b>Department</b>	<b>No.</b>	<b>Program</b>	<b>No.</b>	<b>Program Manager</b>
Municipal Court	70	Municipal Court	001	Municipal Judge

## Program Activities

### *Municipal Court*

The court is the judicial branch of city government. The Judge is appointed to a four-year term by the Mayor with the consent of the City Council. Traffic violations and other ordinance violations are tried by the court. The Judge serves on a part-time basis.

### *Violations Bureau*

To provide for the efficient collection of fines and costs assessed by the Municipal Court, the court has established the Violations Bureau. The Court Administrator operates this bureau and administers the day-to-day records management functions of the court.

<b>Performance Measures</b>				
<b>Metrics</b>	<b>2017 Actual</b>	<b>2018 Actual</b>	<b>2019 Estimate</b>	<b>2020 Projected</b>
New cases opened:	16,295	11,550	8,800	9,500
Traffic tickets	9,462	7,024	5,200	5,700
Complaints - non-traffic	2,340	3,400	1,900	2,000
Code enforcement cases	18	68	16	25
Parking	125	64	135	150
Court settings	70	72	72	72
Cases docketed for court appearance	38,191	40,421	33,000	35,000
Warrants Issued	4,000	4,057	3,000	3,500
DWI cases	95	177	260	275



DEPARTMENT	NUMBER	PROGRAM	NUMBER
<b>Municipal Court</b>	<b>70</b>	<b>Municipal Court</b>	<b>001</b>
<b>Program Budget</b>			
Object of Expenditure	2018 Budget	2019 Budget	2020 Budget
PERSONNEL SERVICES	308,679	347,462	324,745
CONTRACTUAL SERVICES	28,516	37,630	43,550
TOTAL EXPENDITURES	337,195	385,092	368,295
<b>Personnel Schedule</b>			
Position	2018	2019	2020
MUNICIPAL JUDGE	0.20	0.20	0.20
PROVISIONAL MUNICIPAL JUDGE	0.10	0.10	0.10
COURT ADMINISTRATOR	1.00	1.00	1.00
COURT ASSISTANT	2.00	3.00	2.00
COURT AIDE	0.50	0.50	0.50
EMPLOYEES - FULL TIME EQUIVALENTS (FTE)	3.80	4.80	3.80



**Annual Budget -2020**

**General Fund**

DEPARTMENT		NUMBER	PROGRAM			NUMBER
<b>Municipal Court</b>		<b>70</b>	<b>Municipal Court</b>			<b>001</b>
Personnel Services		2018 Budget (Actual)	2019 Budget (Amended)	2020 Budget (Proposed)	Detail	
Account Number	Account Description					
710.00	SALARIES	232,140	245,940	242,641	Regular	182,009
					Part-time	53,200
					Overtime	2,000
					Longevity pay	5,432
711.00	BENEFITS	76,539	101,522	82,104	FICA	18,558
					Workers' compensation	606
					Health insurance	37,000
					Life & Disability insurance	1,819
					Dental insurance	1,200
					Pension	22,921
	TOTALS	308,679	347,462	324,745		



**Annual Budget -2020**

**General Fund**

DEPARTMENT <b>Municipal Court</b>		NUMBER <b>70</b>	PROGRAM <b>Municipal Court</b>		NUMBER <b>001</b>
<b>Contractual Services</b>		<b>2018 Budget (Actual)</b>	<b>2019 Budget (Amended)</b>	<b>2020 Budget (Proposed)</b>	<b>Detail</b>
<b>Account Number</b>	<b>Account Description</b>				
720.11	MISC. CONTRACTUAL	5,150	1,500	1,500	Prisoner incarceration 1,500
720.12	PROFESSIONAL SERVICES	340	10,300	10,300	Interpreters 300 Attorney for indigent offenders 10,000
720.25	DATA PROCESSING	16,901	15,330	16,500	ITI court program subscription 16,500
720.26	PRINTING & BINDING	670	4,500	4,500	Court backing sheets, court forms 4,500
720.34	CREDIT CARD PROCESSING FEES	2,941	0	4,000	Credit Card Processing Fees 4,000
720.51	PROFESSIONAL DEVELOPMENT	2,514	6,000	6,750	See professional development request 6,750
	TOTALS	28,516	37,630	43,550	



DEPARTMENT	NUMBER	PROGRAM	NUMBER
<b>Municipal Court</b>	<b>70</b>	<b>Municipal Court</b>	<b>001</b>
<b>Professional Development Request</b>			
<b>Organization/Conference</b>	<b>Location</b>	<b>Amount</b>	<b>Detail</b>
MEETINGS & SEMINARS	Local	275	Local association training meetings (3)
MO ASSOC FOR COURT ADMIN	Lake of the Ozarks, MO	1,500	Annual conference
MO ASSOC FOR COURT ADMIN		150	Membership dues (3)
MO ASSOC FOR COURT ADMIN		900	MACA Fall Conference
MO JUDGES ASSOCIATION	Lake of the Ozarks, MO	1,150	Annual conference and quarterly board meetings
NATIONAL ASSOC CONFERENCE	New Orleans, LA	2,500	Annual conference (1)
NATIONAL ASSOC FOR COURT ADMIN		125	Membership dues (1)
ST LOUIS ASSOC. OF COURT ADMIN		150	Membership dues (3)
	TOTAL REQUEST	6,750	

**This page left intentionally blank.**

